



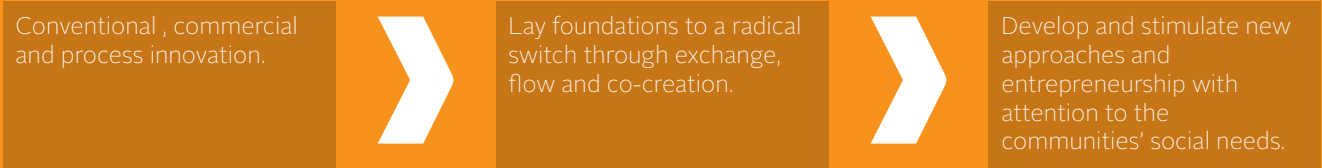
**social innovation**  
through **knowledge**  
exchange

SIKE will demonstrate the potential of universities to use their knowledge in order to affect **social change** in a direct and meaningful way.  
It will do this by developing new paradigms and tools for **knowledge exchange** practice that embrace social **innovation**, encourage social **entrepreneurship** and offer more effective **support to local communities**.

Co-funded by the  
Erasmus+ Programme  
of the European Union

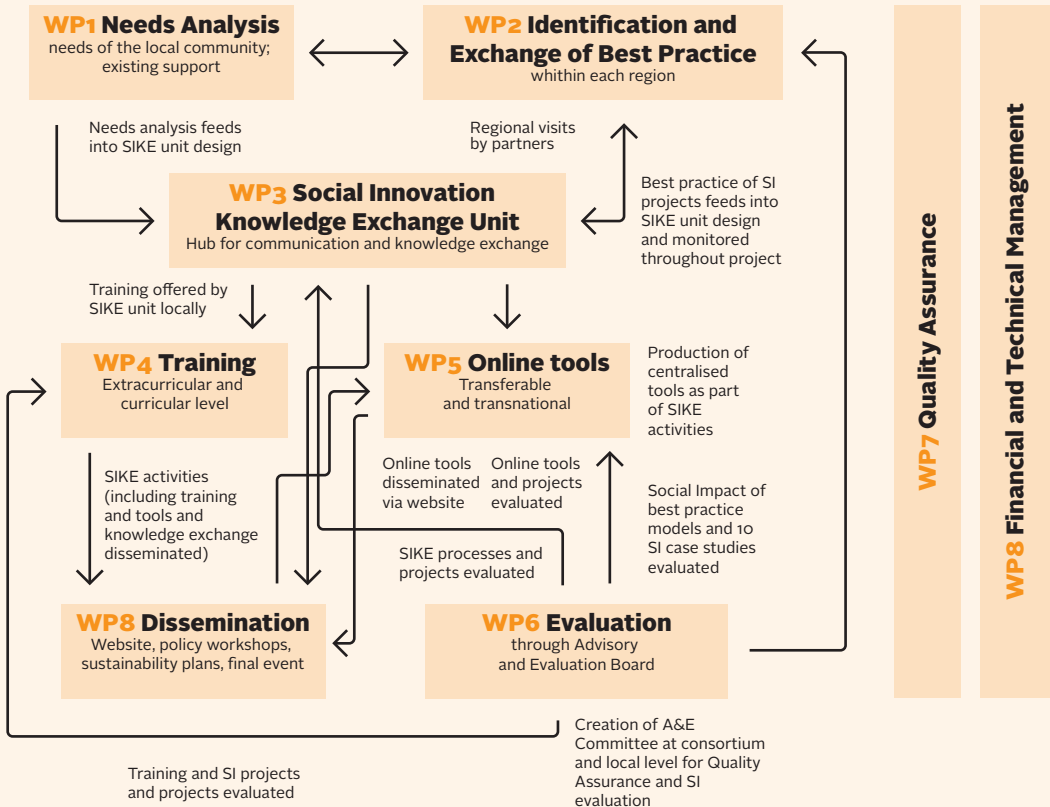


**Facilitating transition**



- Specifically the project will**
- Support social innovation through knowledge exchange;
  - Stimulate social entrepreneurial skills within the regional community;
  - Develop a training programme for professional development in social innovation.

**Methodology**  
Work Packages

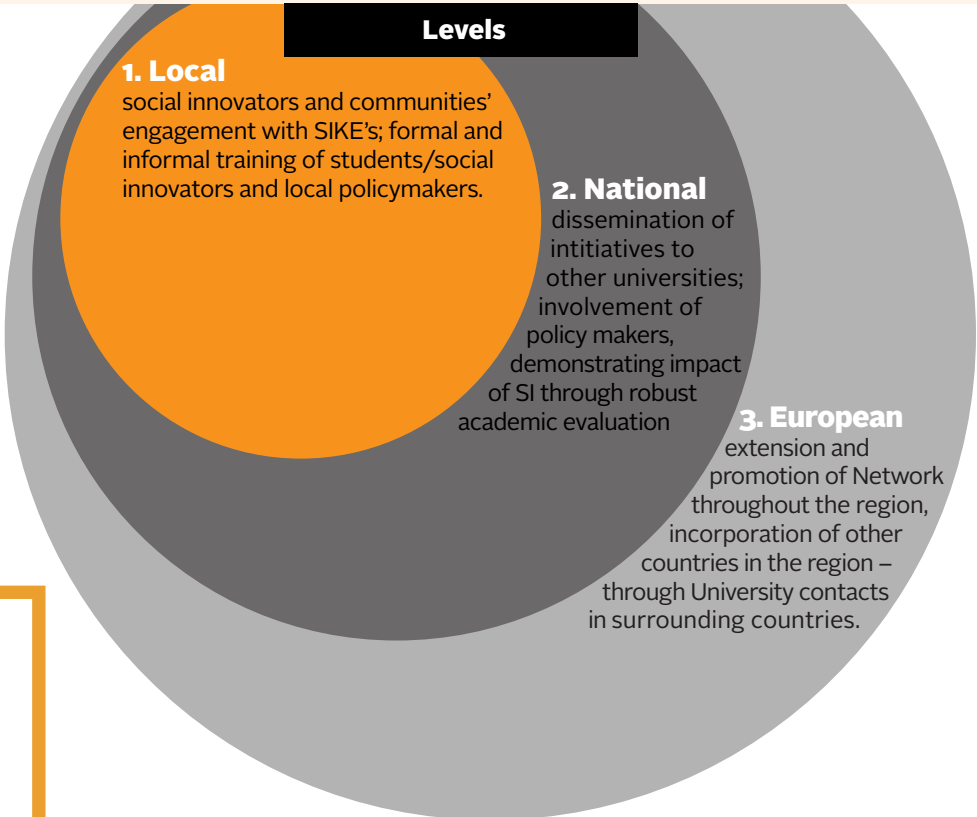


**Expected results**

Above all, the project's outcomes will ultimately benefit the communities themselves.

Specifically, the project will support social innovation engagement for at least:

- 50 social innovations**
- + 200 individuals**
- + 50 institutions** through the SIKE activities
- + 15 new social innovation projects** through the work of each unit



**Partners**

